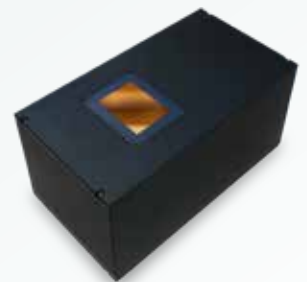
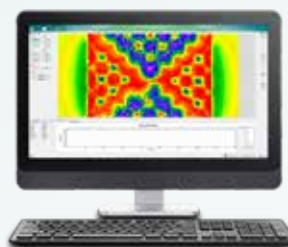
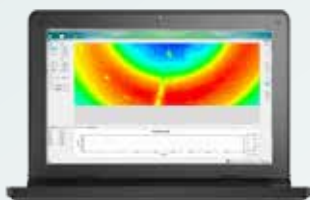




Technical Specifications

Devices	Sensor size (mm ²)	Visualization	Sensor type	Field imaging, quantitative (type B & C only)	Geometrical resolution (µm) at 80% central	Geometrical precision (µm) at 80% central
S	20,5 x 15,5	X	A, B, C, D	X	25 (5MPx), 15 (10MPx)	20
L	60 x 45	X	A, B	(X)	70 (5MPx)	100
XL	60 x 45	X	A, B, C	X	60 (5MPx), 30 (10MPx)	30

Device type	USB 2.0 USB 3.0	Power socket	U_power supply (VAC)	U_input (VDC)	I_input_Max (A)	L x B x H (cm)	Weight (kg)
S	X X	XLR	100 - 240	12	3	23 x 15 x 6	2,1
L	X -	XLR	100 - 240	12	3	28,5 x 15 x 13,5	4,5
XL	X X	XLR	100 - 240	24	3	52 x 25,5 x 10,5	6,5



Technical Specifications

Sensor type	Visualization	Field imaging (quantitative)	Saturation (mT)	Field resolution (mT) at 20x image averaging	Field precision (80% central)	Single image (5MPx Camera)	Typical specimens
A	X	-	± 2mT		-	2	Low field strength
B	X	X	± 65mT	0,5mT	< 5%	2	Hard magnetic materials
C	X	X	± 125mT	0,9mT	< 5%	2	Hard magnetic materials
D	X	-	± 6mT (Bias)		-	2	Soft magnetic materials

System requirements	
Windows	7, 8, 8.1, 10
Graphic card	yes
RAM	4 GB
Hard disk	1 GB
Interface	USB 2.0 USB 3.0
Display resolution	1920px x 1200px (24")

Distance sensor-specimen
Without protection film 5µm
With protection film 55µm
(depending on the surface of the specimen)

Operating conditions handling
Laboratory, low-dust
Working temperature 25°C ± 10 K
Storage temperature 25°C ± 25 K
Desktop devices for PC use
Manual placing of the specimen on the sensor

