

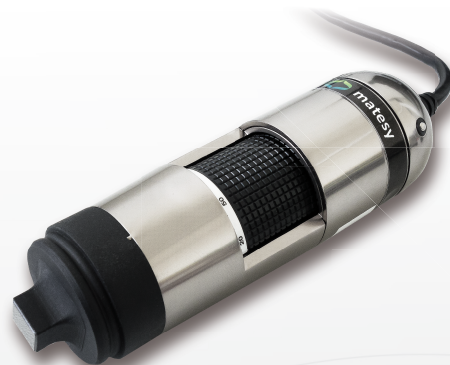
Forensic set S

Magneto-optical analysis systems



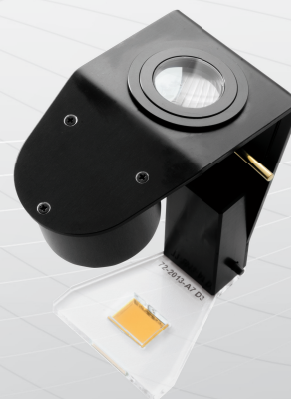
mageye

- Magneto-optical sensor
- Type: A; Size: 8x8 mm
- Visualization range: ± 2 mT
- Yoke
- Optical resolution: 10 μ m
- Software for visualization and image recording



magview

- Magneto-optical basic device
- Magneto-optical sensor (2 pcs.)
- Type: A; Size: 20.5x15.5 mm
- Type: A; Size: 8x8 mm
- Visualization range: ± 2 mT
- Adjustable analyzer
- Battery powered



MO-sensor set

- Set with magneto-optical sensors
- Type: A
- Size: 17x15 mm²; 8 x 8 mm
- Visualization range: ± 2 mT
- Transfer film
- Tweezers, magnet, polarizing filter

Accessories: Instructions, protective box, PC / laptop (optional)



Your partner for magnetism and lead testing



Contact & information

Matesy GmbH
Löbstedter-Str. 101-103
D-07749 Jena
Deutschland

Tel.: +49 (0) 03641 79799 00
Fax: +49 (0) 03641 79799 01
E-mail: info@matesy.de
Web: www.matesy.de



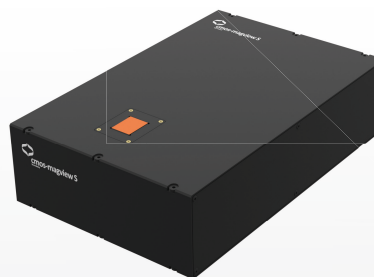
Forensic set M

Magneto-optical analysis systems



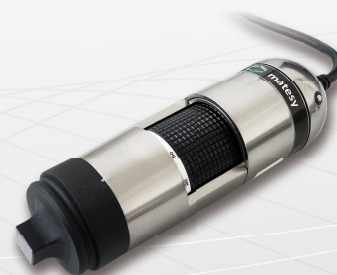
cmos-magview S

- Magneto-optical basic device
- Magneto-optical sensor
- Type: A
- Size: 20.5x15.5 mm
- Visualization range: ± 2 mT
- Optical resolution: $<25 \mu\text{m}$
- USB interface
- Software for visualization and image recording, case and user manual



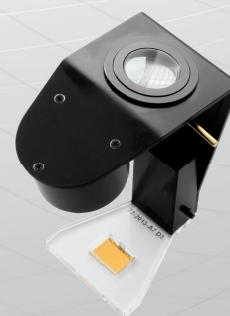
mageye

- Magneto-optical sensor
- Type: A; Size: 8x8 mm
- Visualization range: ± 2 mT
- Yoke
- Optical resolution: $10 \mu\text{m}$
- Software for visualization and image recording



magview

- Magneto-optical basic device
- Magneto-optical sensor (2 pcs.)
- Type: A; Size: 20.5x15.5 mm
- Type: A; Size: 8x8 mm
- Visualization range: ± 2 mT
- Adjustable analyzer
- Battery powered



MO-sensor set

- Set with magneto-optical sensors
- Type: A
- Size: $17 \times 15 \text{ mm}^2$; $8 \times 8 \text{ mm}$
- Visualization range: ± 2 mT
- Transfer film
- Tweezers, magnet, polarizing filter



Accessories: Instructions, protective box, PC / laptop (optional)

Your partner for magnetism and lead testing



Contact & information

Matesy GmbH
Löbstedter-Str. 101-103
D-07749 Jena
Deutschland

Tel.: +49 (0) 03641 79799 00
Fax: +49 (0) 03641 79799 01
E-mail: info@matesy.de
Web: www.matesy.de

